

TECHNICAL RIDER

THEATER AMSTERDAM





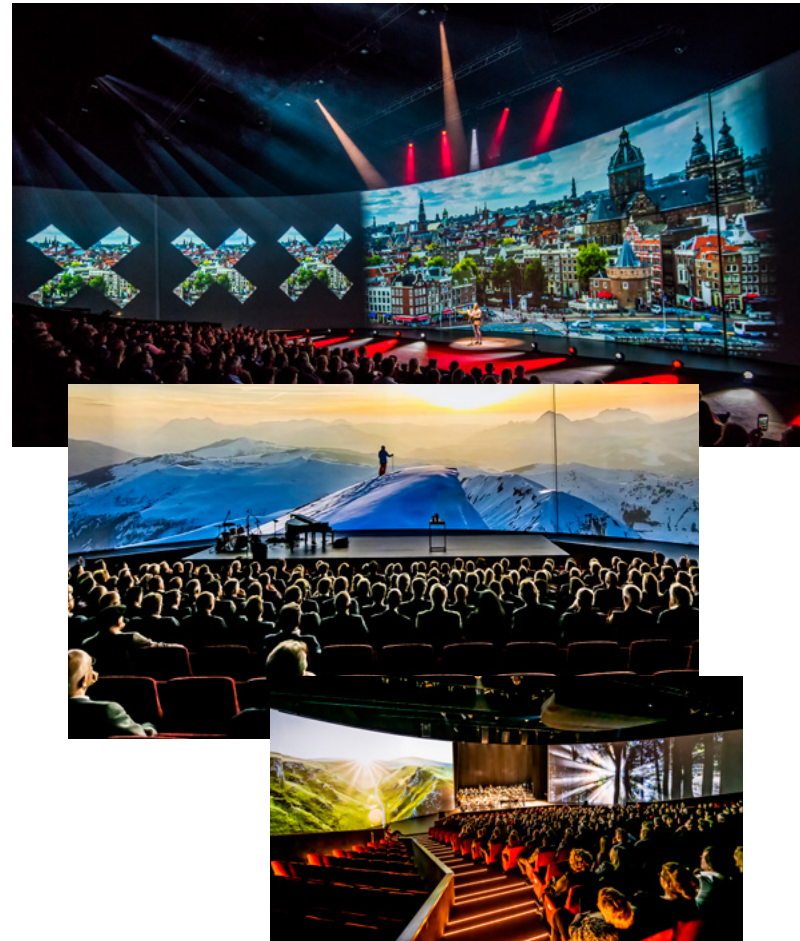
AUDITORIUM

MAIN STAGE

The auditorium has a large main stage in front of the projection screen and a stage behind the screen.

The screen is 55 meters wide and is a semicircle, 180 degrees. A total of 500 square meters screen, offers unique panoramic projection possibilities. In addition, the screen has a sliding opening option, for amazing surprise effects, or to reveal the black box area to the audience. On top of that the audience can walk over the stage to the decorated backstage area for a dinner, party or a festival.

The front stage is fully aligned and integrated with the ground floor, approximately 160m² floor space is available. The auditorium is equipped with 924 seats. The seating capacity can be extended up to 1100 seats by removing 120m² of front stage floor. Extra costs for this extension are involved.





AUDITORIUM

LIGHT & VIDEO

Flexibility

The auditorium itself is equipped with 11 movable hanging trusses. The intermediate distance between each of the trusses is 3,5 meters, offering flexible rigging options. Each trusse is equipped with 4 separate DMX universes and 6 separate 16 amp channels, all patchable.

Standard our Disguise 2x4 media server creates content playback. In addition we also offer playback by using Barco E2 system offering maximum flexibility. The projection blend is made within the 5 projectors.



LIGHT

DESK	1	GrandMA 3 Light
HALL LIGHTS	73	ETC ColorSource par
FRONT LIGHTS	8	Robe T2 Profile
	8	Robe Esprite
BACK/TOP LIGHT	8	Robe 350 LEDBeam
	12	Robe 150 LEDBeam
	2	Robe Esprite

VIDEO

CONTROLS	1	BARCO E2 GEN 2
	1	Disguise 2x4 Pro (2x Displayport VFC)
PROJECTION	5	Panasonic PT-RZ21K (20K ANSI Lumen Laser projector)
	5	Panasonic 0,9-1,1:1 zoom lens

ON REQUEST		
PREVIEW CLOCK		58" NEC LCD
PREVIEW MONITOR		58" NEC LCD
MACBOOK PRO 15"		MacBook Pro 15-inch Retina dual-core i7 SSD
WINDOWS LAPTOP		Acer Aspire 3 (Windows) i3 laptop



AUDITORIUM

AUDIO

3D Spatial audio

In addition to the main audio PA system, the theater is equipped with a state of the art 3D spatial audio system, available at an additional costs. The two systems combined create the ultimate 3D audio experience for your audience with three dimensional sound blasting guests off their chairs.

3D audio gives you a broadened stereo setup that makes guest feel as if they are right in the middle of a unique audio experience. The setup includes 16 midrange loudspeakers, all individual controllable. The speakers are systematically placed around the auditorium's ceiling, each speaker as a separate channel controlled by the Astro Audio's SARA II server. Our in-house audio engineers will advise and support you in creating the best setup for your event.



AUDIO

CONTROLS	
DESK	Allen & Heath D-LIVE S5000
RACK	DM48 Mixrack 48 in/24 out (96 kHz) + Dante

MAIN PA	POSITION	#	TYPE
Row 1/6	Top Centre	6	Alcons Lr14 – Line Array
	Monitors	4	D&B M4
ROW 7/18	Top Left	9	Alcons Lr18 – Line Array
	Top Left	3	Alcons Lr18B cardioide – Line Array
	Top Right	9	Alcons Lr18 – Line Array
	Top Right	3	Alcons Lr18B cardioide – Line Array
ROW 19/32	Top Left	6	Alcons Lr14 – Line Array
	Top Right	6	Alcons Lr14 – Line Array
SUB	Below Tribune	12	Alcons Bf362 Cardioide

ON REQUEST / MICROPHONES		
RECEIVERS	12	Shure Axient AD4Q + Dante
HANDHELD	2	Shure AD2 Handheld – Beta58 mic head
BELTPACKS	10	Shure AD1 Beltpack – DPA 4066 Beige/Black

ON REQUEST / INTERCOM		
WIRED	8	GreenGo Beltpack X
WIRELESS	4	GreenGo Wireless Beltpack X



AUDITORIUM

CONTENT PLAYBACK

Resolution

RESOLUTION:

8000x1200 pixels

FRAME RATE:

50 fps (fast animations/film) 25 fps (general use)

VERSION CONTROL:

Version tags = automatic replace

e.g. myfile_**v1**.mov is replaced by myfile_**v2**.mov

Proxy = Low res programmer file / placeholder. Syntax filename_v1_proxy1.mov

myfile_**proxy1**.mov is 'proxy 1 (half-resolution) of an asset called myfile.mov'

myfile_**proxy2**.mov is 'proxy 2 (quarter-resolution) of an asset called myfile.mov'

myfile_**proxy3**.mov is 'proxy 3 (1/8-resolution) of an asset called myfile.mov'

Frame replacement = automatically replacing part of frames

File container:

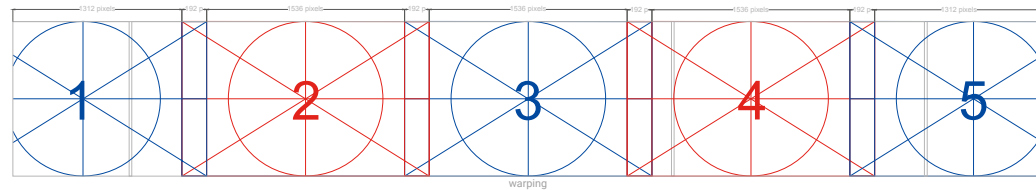
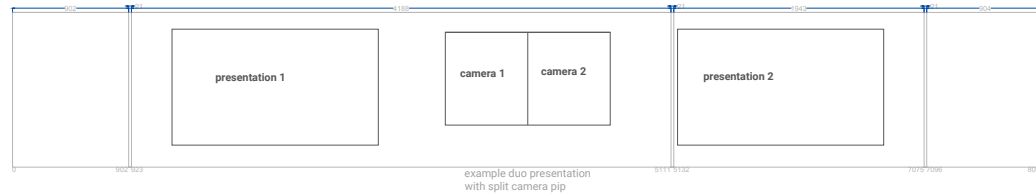
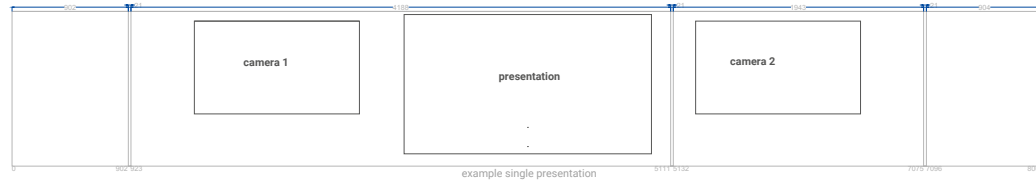
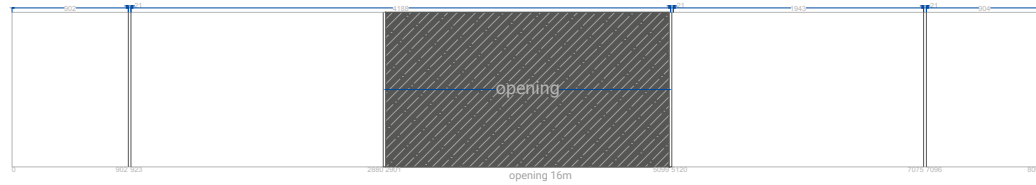
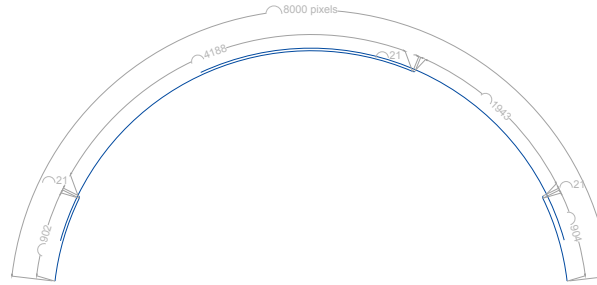
.mov for video in NotchLC or HAP

.jpg or .png (transparent) for stills

.wav for audio files

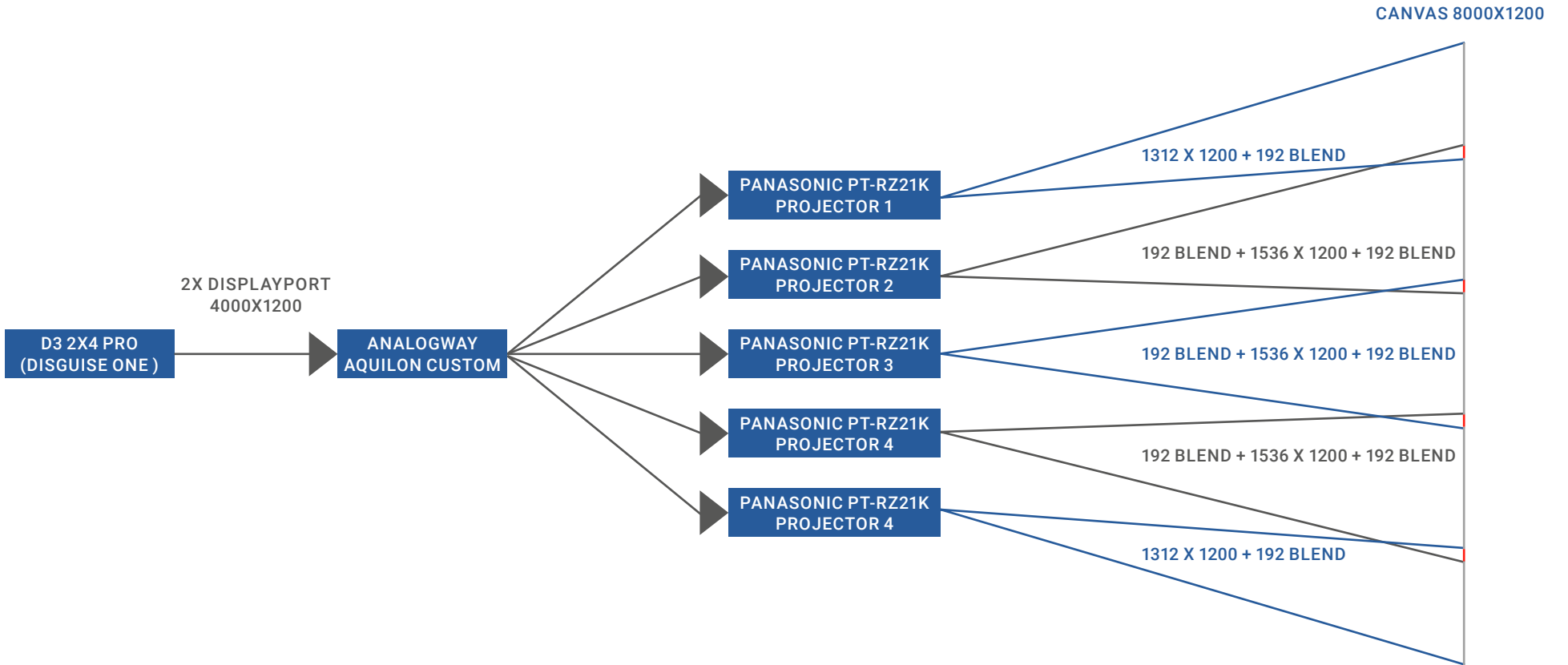



**VIDEO
SCHEMATICS**





PIXELMAP





AUDITORIUM

CONTENT PLAYBACK

Content resolution format specifications

VIDEO CODEC:

NotchLC: <https://notchlc.notch.one>

Plugin for Adobe CC/QuickTime Legacy (windows+mac)

NotchLC (Excellent/optimal) = General use

NotchLC (Good) = Use for testing/proxy

Please be aware to Include Alpha channel when necessary

AUDIO EMBEDDED:

.wav 48 kHz 16-bit samples, stereo, uncompressed

DISGUISE SDI INPUT SPECS

720x486i @ 59.94 Hz NTSC

720x576i @ 50.00 Hz PAL

1280x720p @ 23.976Hz, 24Hz, 25Hz, 29.97Hz, 30Hz, 50Hz,
59.94Hz, 60Hz

1920x1080i @ 47.96Hz, 48Hz, 50Hz, 59.94Hz, 60Hz

1920x1080PsF @ 23.976Hz, 24Hz, 25Hz, 29.97Hz, 30Hz

1920x1080p @ 23.976Hz, 24Hz, 25Hz, 29.97Hz, 30Hz, 47.96Hz, 48Hz,
50Hz, 59.94Hz, 60Hz

2048X1080p @ 23.976Hz, 24Hz, 25Hz, 29.97Hz, 30Hz, 47.96Hz, 48Hz,
50Hz, 59.94Hz, 60Hz

2048X1080i @ 47.96Hz, 48Hz, 50Hz, 59.94Hz, 60Hz

2048x1556PsF @ 14.98Hz, 15Hz, 18.98Hz, 19Hz

4K UHD 3840x2160, 4K P/PsF @ 23, 24, 25, 29, 30fps

4K DCI 4096x2160, 4K P/PsF, @23, 24, 25, 29, 30fp





AUDITORIUM LIVESTREAM POSSIBILITIES

Livestream / hybrid events

The auditorium has all in house facilities for a livestream production. Whether it's a hybrid concept with live audience or an XXL studio setting. The grandeur of the auditorium combined with the panoramic projection screen is a unique decor for both online and live attendees. Whether it's a keynote speaker, a TV broadcast, an award show or an artist performance, our expert team will organize all matching facilities.





AUDITORIUM

OPTIONAL LIVESTREAM FEATURES



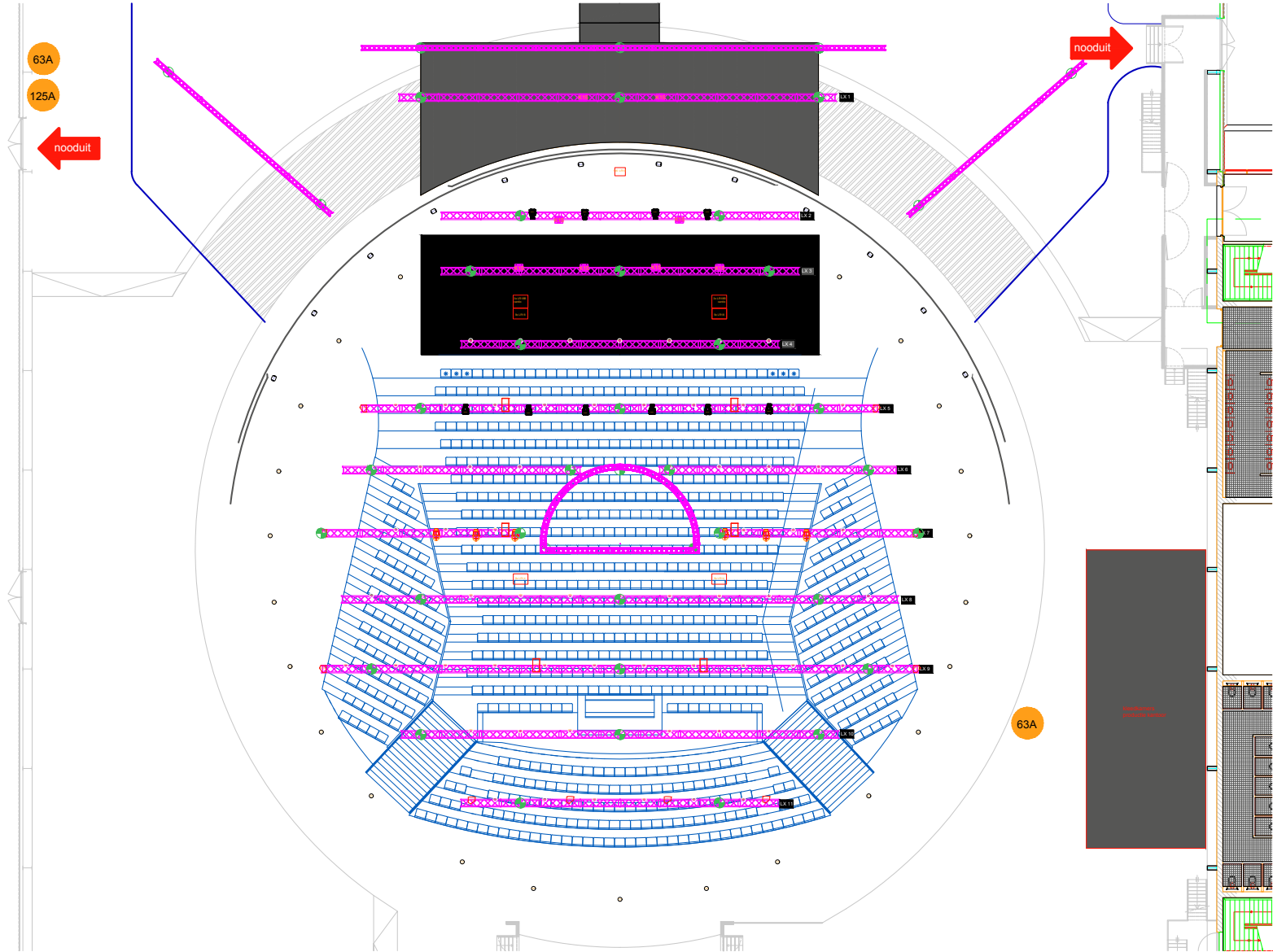
OPTIONAL LIVESTREAM FEATURES

CAMERAS	2	Panasonic AW-UE150WEJ – PTZ Camera
	1	Panasonic AW-HN130WEJ – PTZ Camera
	1	Panasonic AW-RP60GJ – Camera remote
SWITCHER	1	Panasonic AV-HS450E – Camera Switcher
STREAMING	1	vMix production PC
	1	vMix streaming PC
STREAM PLATFORM	Vimeo Premium	
RECORDING	Available via online download or harddisk	
POST EDITOR	Available on request	
HANDHELD CAMERA	Sony FS9	
DOLLY CAMERA		
PTZ CAMERA		
CRANE	Crane with JIB (7/9 meters)	

*Livestream features are not included in the standard venue rental price.



LIGHT, SOUND & RIGGING FLOORPLAN





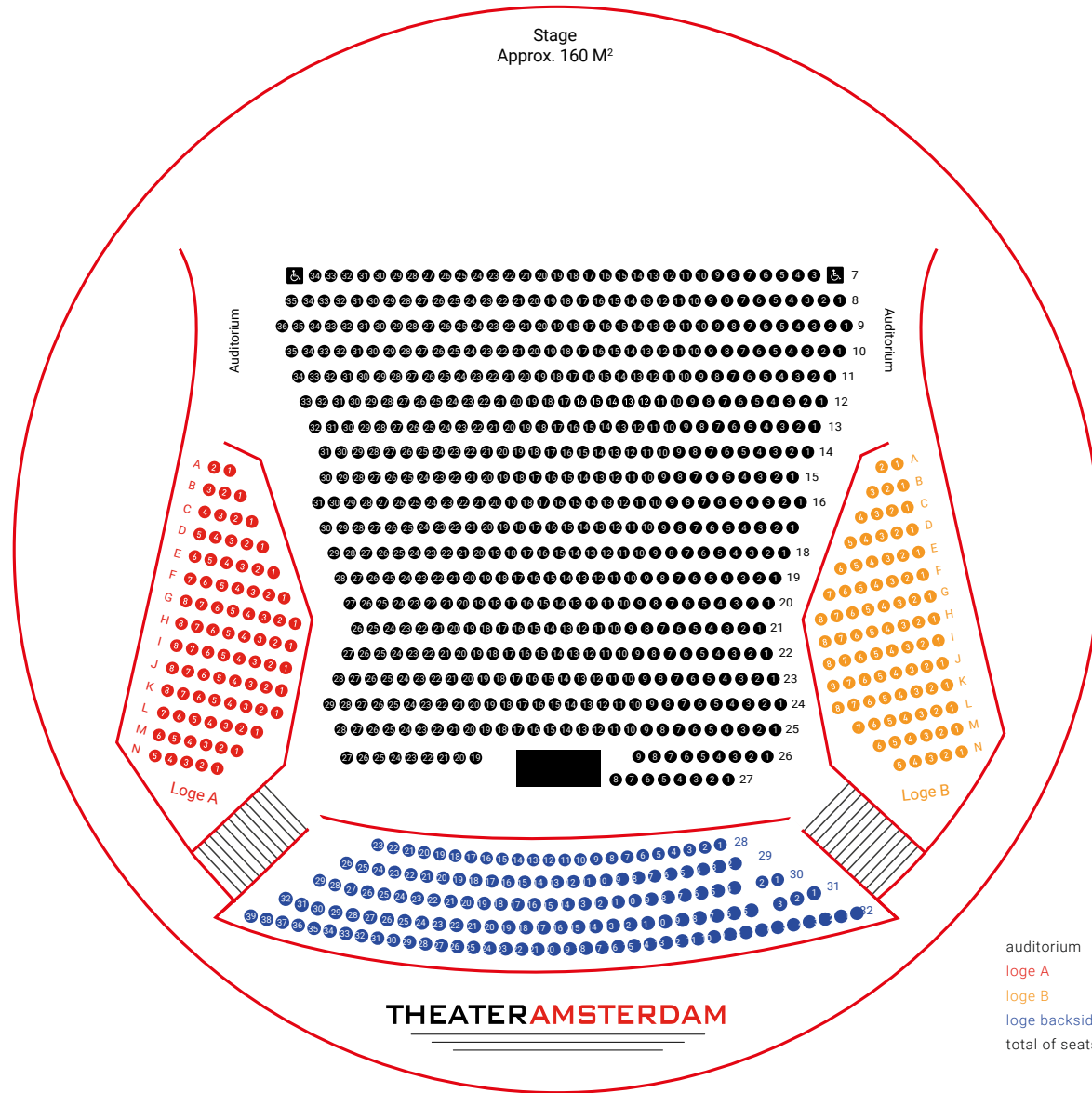
SEATING PLANS





SEATING PLANS

Seating capacity - standard



THEATERAMSTERDAM

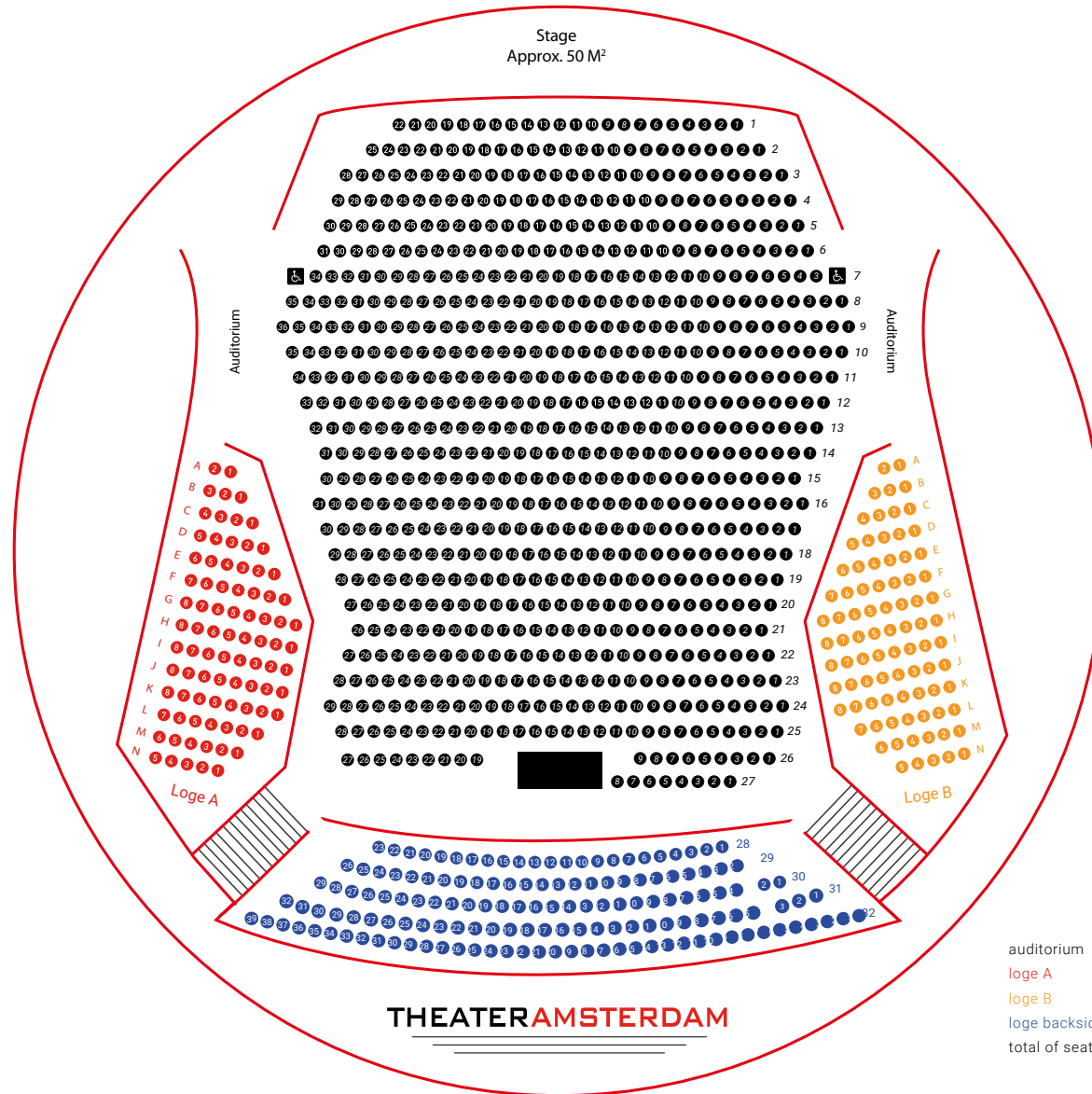




SEATING PLANS

Seating capacity - extended

Extra costs are involved



auditorium	772	seats
loge A	85	seats
loge B	85	seats
loge backside	149	seats
total of seats	1091	

THEATERAMSTERDAM



THEATERAMSTERDAM

THEATER AMSTERDAM

Danzigerkade 5
1013 AP Amsterdam

020 7055 055

events@theateramsterdam.nl

www.theateramsterdam.nl

MARTIN DE RIDDER

TECHNICAL PRODUCER

020 7055 055

mderidder@theateramsterdam.nl

The innovative audiovisual expertise of our in-house technology specialists ensure an unforgettable event. Theater Amsterdam works with JUR as a preferred technical partner exclusively. With their extensive experience, we are able to offer the best support for your event. For other external technical companies a buy out fee will be calculated.

Inspired? Contact our technical producer for a tailored proposal.
